

Flying Machine

♩=180

Brooklyn United 2006

1 2 1 2

2nd Baritone

Musical staff for 2nd Baritone, measures 1-4. The staff is in treble clef with a key signature of one sharp (F#) and a 6/8 time signature. The notes are: G4 (quarter), A4 (quarter), B4 (quarter), C5 (quarter), B4 (quarter), A4 (quarter), G4 (quarter), F#4 (quarter), G4 (quarter), A4 (quarter), B4 (quarter), C5 (quarter).

5 1 1 1

Musical staff for 2nd Baritone, measures 5-8. The staff is in treble clef with a key signature of one sharp (F#) and a 6/8 time signature. The notes are: G4 (quarter), A4 (quarter), B4 (quarter), C5 (quarter), B4 (quarter), A4 (quarter), G4 (quarter), F#4 (quarter), G4 (quarter), A4 (quarter), B4 (quarter), C5 (quarter).

11 1 1 1 2 1 1 1 2

♩=120

Musical staff for 2nd Baritone, measures 11-16. The staff is in treble clef with a key signature of one sharp (F#) and a 2/4 time signature. The notes are: G4 (quarter), A4 (quarter), B4 (quarter), C5 (quarter), B4 (quarter), A4 (quarter), G4 (quarter), F#4 (quarter), G4 (quarter), A4 (quarter), B4 (quarter), C5 (quarter).

17 1 1 1 1 1 2 1 1 1 2

Musical staff for 2nd Baritone, measures 17-23. The staff is in treble clef with a key signature of one sharp (F#) and a 2/4 time signature. The notes are: G4 (quarter), A4 (quarter), B4 (quarter), C5 (quarter), B4 (quarter), A4 (quarter), G4 (quarter), F#4 (quarter), G4 (quarter), A4 (quarter), B4 (quarter), C5 (quarter).

24 2 1 1 1 1 1 1 2 1 1

Musical staff for 2nd Baritone, measures 24-30. The staff is in treble clef with a key signature of one sharp (F#) and a 2/4 time signature. The notes are: G4 (quarter), A4 (quarter), B4 (quarter), C5 (quarter), B4 (quarter), A4 (quarter), G4 (quarter), F#4 (quarter), G4 (quarter), A4 (quarter), B4 (quarter), C5 (quarter).

31 1 1 1 1 1 1 1 1 1

Musical staff for 2nd Baritone, measures 31-37. The staff is in treble clef with a key signature of one sharp (F#) and a 2/4 time signature. The notes are: G4 (quarter), A4 (quarter), B4 (quarter), C5 (quarter), B4 (quarter), A4 (quarter), G4 (quarter), F#4 (quarter), G4 (quarter), A4 (quarter), B4 (quarter), C5 (quarter).

38 2 1 1 1 2 1 1

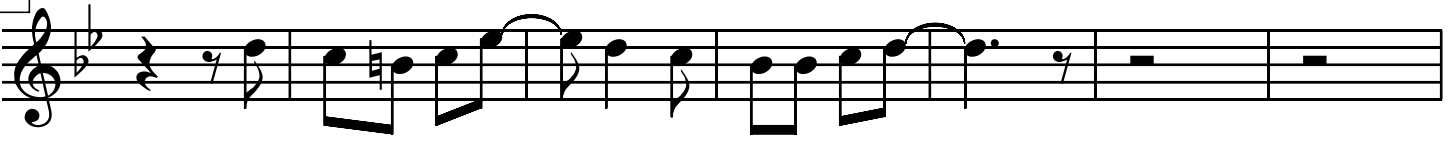
Musical staff for 2nd Baritone, measures 38-44. The staff is in treble clef with a key signature of one sharp (F#) and a 2/4 time signature. The notes are: G4 (quarter), A4 (quarter), B4 (quarter), C5 (quarter), B4 (quarter), A4 (quarter), G4 (quarter), F#4 (quarter), G4 (quarter), A4 (quarter), B4 (quarter), C5 (quarter).

45 1 1 2 1 1 1 1

Musical staff for 2nd Baritone, measures 45-51. The staff is in treble clef with a key signature of one sharp (F#) and a 2/4 time signature. The notes are: G4 (quarter), A4 (quarter), B4 (quarter), C5 (quarter), B4 (quarter), A4 (quarter), G4 (quarter), F#4 (quarter), G4 (quarter), A4 (quarter), B4 (quarter), C5 (quarter).

52

1 2 2 1 1 1 1



59

1 12 1 1 1 1



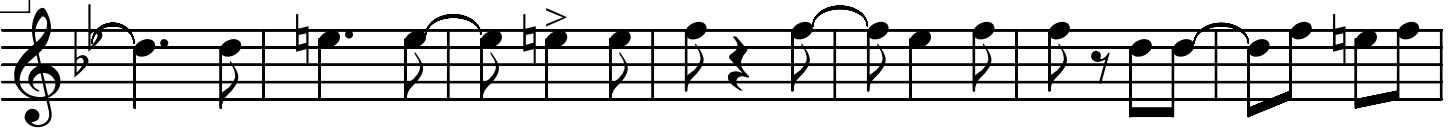
66

1 1 1 1 12 1 1



73

1 1 1 2 1 1 1 1 1 1



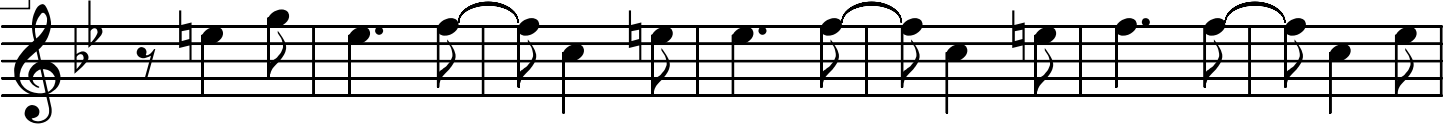
80

1 1 2 1 1 1 2 1



87

2 1 2 1 1 1 1 2



94

1 2 1 1 1 1

